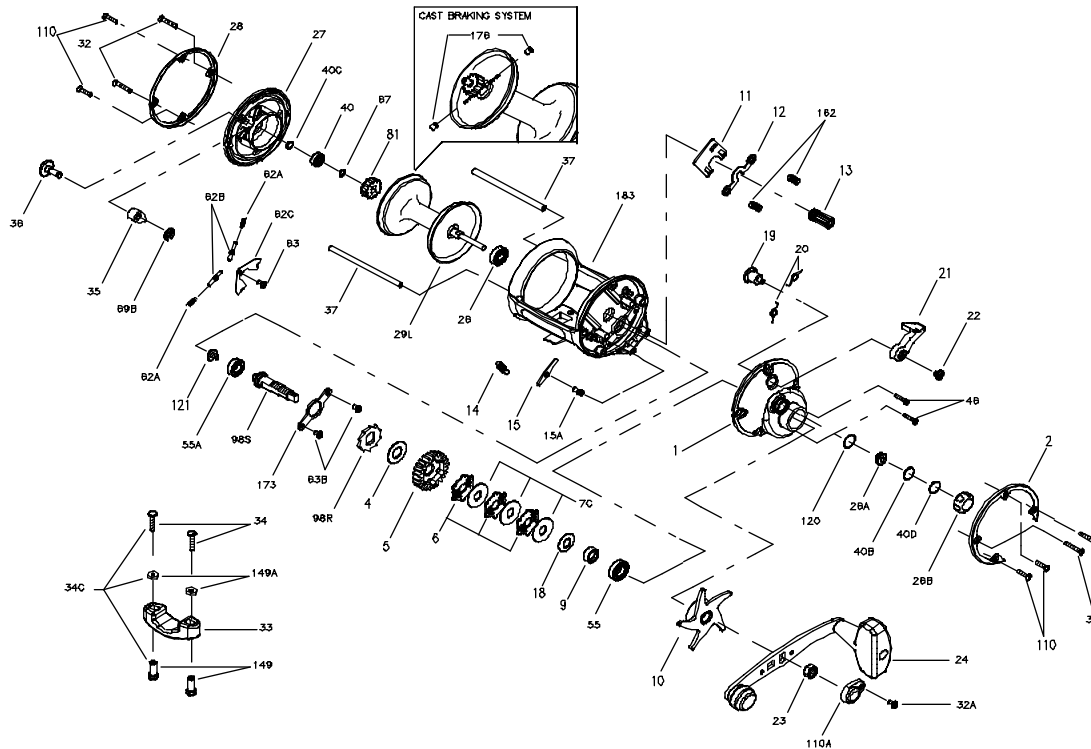




# PARTS LIST FOR MODELS 545GS AND 555GS



KEY NO.	DESCRIPTION	PART NO.
1	Right Side Plate	001 555
2	Right Side Ring	002 555
4	Fiber Washer	004 060
5	Main Gear (545 only)	005 555MAG
	Main Gear (555 only)	005N555
6	Friction Drag Washer (3 req.)	006 525MAG
7C	Metal Drag Washer (3 req.)	086 049L
9	Spacing Sleeve	009 555

KEY NO.	DESCRIPTION	PART NO.
10	Drag Star	010 555
11	Eccentric Jack	011 555
12	Pinion Yoke	012 555
13	Pinion Gear (545 only)	013 545
	Pinion Gear (555 only)	013 555
14	Dog Spring	014 330
15	Dog	015 340
15A	Dog Pin	158N555
18	Tension Spring Washer	018 505

KEY NO.	DESCRIPTION	PART NO.
19	Eccentric	019 555
20	Eccentric Spring (2 req.)	020 155
21	Eccentric Lever	021 310
22	Eccentric Screw	022 310
23	Handle Nut	023 555
24	Handle	024 555
26	R.S. Spool Ball Bearing	026 025
26A	Right Side Bushing	026 555
26B	Spool Tension Control Cap	026B555
27	Left Side Plate (545 only)	027 545
	Left Side Ring (555 only)	027 555
28	Left Side Ring	028 555
29L	Aluminum Spool Assembly (545)	029L545
	Aluminum Spool Assembly (555)	029L555
32	Frame Post Screw (4 req.)	032 310
32A	Handle Lock Screw	032 015
33	Rod Clamp	033 113
34	Rod Clamp Screw (2 req.)	034 045
34C	Rod Clamp Screw w/Nuts	034C045
35	Click Tongue	035 310N
36	Click Button	036 555
37	Frame Post (2 req.) (545 only)	037 535
	Frame Post (2 req.) (555 only)	037 555
40	L.S. Spool Ball Bearing	040 320
40B	Metal Thrust Washer	040C555
40C	Metal Thrust Washer	040C310
40D	Rubber Thrust Washer	040D555
46	Side Plate Screw (2 req.)	046 4300
55	Ball Bearing	055 012H
55A	Ball Bearing	020 722
62A	Click Spring (2 req.)	062 545
62B	Click Pin (2 req.)	062B310
62C	Click Spring Cover	062C310
63	Click Spring Screw	063 500S
63B	Retaining Ring	063 330
67	Lock Ring	067 009
69B	Retaining Ring	069B600
81	Click Ratchet	081 555
98R	Main Gear Ratchet	098 555
98S	Gear Stud	134 555
110	Side Plate Short Screw (4 req.)	110 050
110A	Handle Nut Lock Cap	110A555
120	O-Ring	120 113H
121	Bearing Screw	121 525
149	Rod Clamp Nut (2 req.)	149 045
149A	Rod Clamp Hex Nut (2 req.)	149 200
162	Clutch Spring (2 req.)	162 130
173	Bearing Retainer	173 555
176	Casting Brakes (2 req.)	176 555
183	Frame (545 only)	183N545
	Frame (555 only)	183N555